



November 2016

Greetings in HIS precious name

In our October Newsletter I asked you to pray for the Emmaus Ministries South Africa Indaba and Annual General Meeting. KZN Emmaus was well represented and we were welcomed, with such generosity and agape love. We were richly blessed with a productive and successful Indaba and AGM. Thank you for your prayers.

At the Indaba we were presented with the new EMSA Board Structure effective 1 January 2017. The most noticeable change is that previously the EMSA board representatives were grouped under **Emmaus and Chrysalis** and then those that served both **Emmaus and Chrysalis**, then **Kairos, Alarga, Face to Face** and the **International Representative**. You will see in the new structure - **EMSA Executive, EMSA Regional Directors, the EMSA Executive Support and EMSA Support** i.e. **EMMAUS MINISTRIES SOUTH AFRICA**.

We also received the new EMSA Community Board Structure effective 1 January 2017. The most notable change is the **ALD's for Chrysalis, Emmaus, Face to Face and Other Ministries**. We now have a **single** board in each **geographical area** which will administer **all ministries** in its area.

Both structures were adopted at the Indaba.

I have included the **two structures** together with the **two administration proposals** from KZN Emmaus and Drakensberg Emmaus which were accepted by both boards. Also find the **KZN Emmaus Board for 2017** as elected at the Annual General Meeting and a **Board Nomination Form** to fill the vacant positions. Please return your nominations to me as soon as possible. We are available, to answer any questions you may have. All this information will be on our website www.kznemmaus.co.za



On Saturday 19th November, we had our team selection for Walks 110 and 111 and have our first Team Formation Day on the 28 January 2017. The Walks will be held on the 20 – 23 April and the 27 – 30 April 2017 at Mariannahill. May we see God's will be done as we serve with love, joy and humility?



This is the last newsletter for 2016 and I think it is fitting to stop and to reflect on all that it was for us. For some of us, much to celebrate and be thankful for, and for others, times when life seemed difficult and full of challenges. **We come from all walks of life looking for, longing for, a sacred moment in time when we have a chance to start fresh – a new centre, a new beginning: a rebirth of faith, hope and love.** In John 1 v 1 – 14 we read about the “The word became Flesh” verse. 14. The Word became flesh and made his dwelling among us. We have seen his glory, the glory of the One and Only, who came from the Father, full of grace and truth. As we prepare for Christmas, with all the planning that goes with this, let us try to find the **true stillness and quietness and be able to rest in God's grace and renewal. Trusting that in Jesus, God gave us the gift of beginning again. Jesus! Once a babe, then a man, always the Son of God.**

Be blessed, be happy and share your love. The more you give away the more you have to give and the more you get in return at this special time of the year.

May you have a wonderful, blessed Christmas and peaceful New Year.

It has been a blessing to be part of this amazing ministry.

De Colores

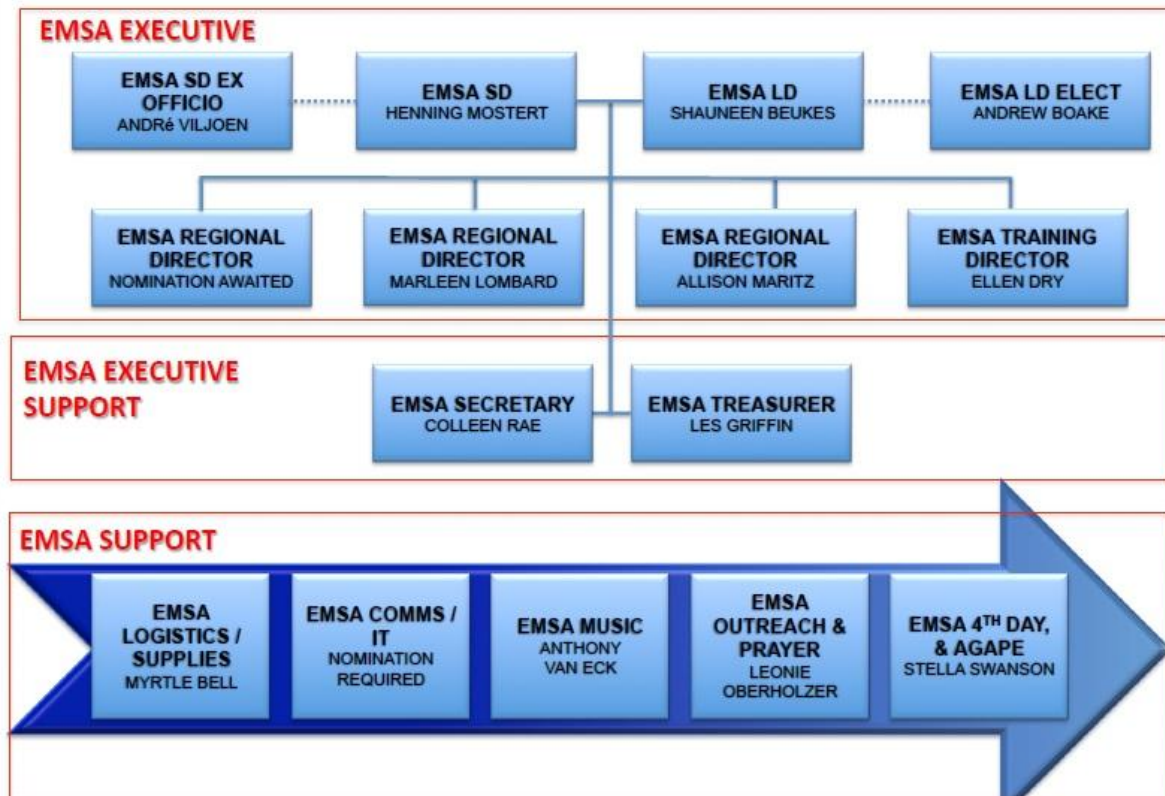
Love and blessings

Cheryl Offen

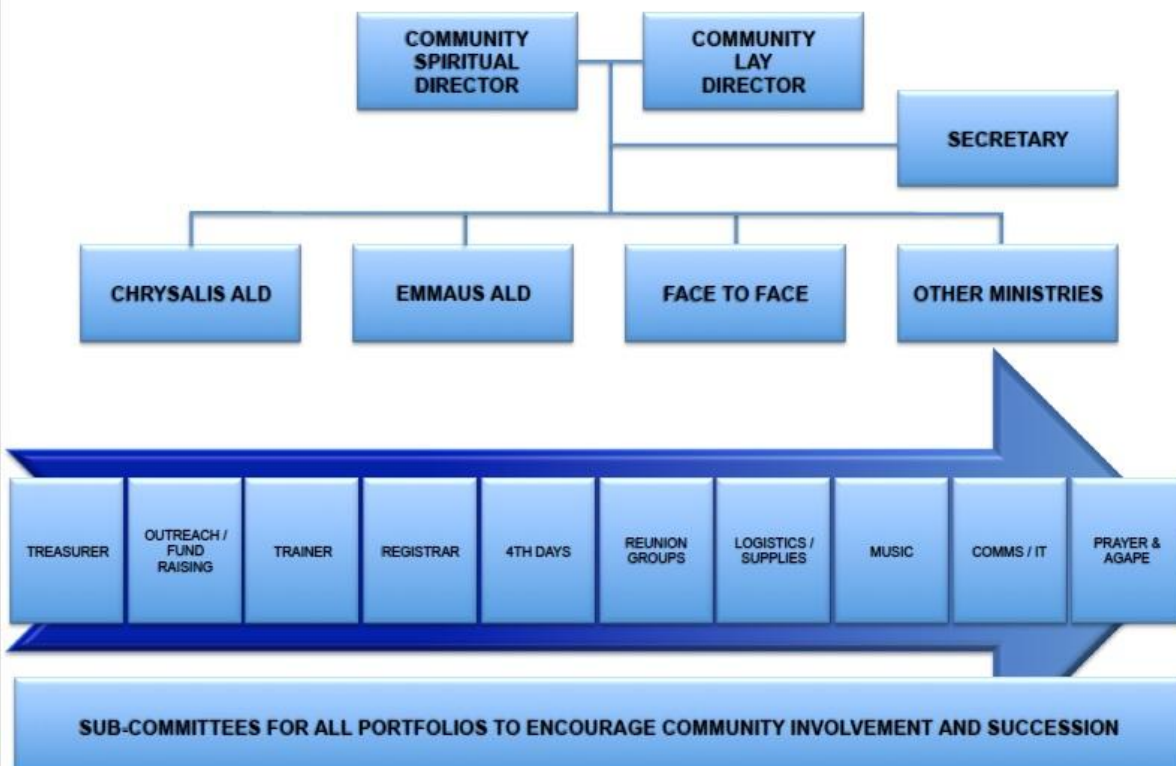
Community Lay Director

KWA ZULU NATAL EMMAUS

EMSA BOARD STRUCTURE EFFECTIVE 1 JANUARY 2017



EMSA COMMUNITY BOARD STRUCTURE EFFECTIVE 1 JANUARY 2017



Statement

Hi Team

Just a short info session on the KZN\DRAK Chrysalis division. After having a short meeting at the EMSA AGM between KZN and ourselves we have decided to have the two communities with their own Chrysalis Events. This works in line with the new board structure as Chrysalis will become an ACLD on our board.

There will be a board rep for Chrysalis with a subcommittee under him/her.

KZN and Drak have also decided to share all the assets that Chrysalis has equally including banking resources. This will help both communities with the start-up of their Flights.

With this happening we will be supporting each other with the start-up of Flights with team so I do encourage the sharing of data bases so that we can fish from an experienced pool of team to assist with the flights.

Quentin
Drakensberg CLD

Administration of Emmaus Ministries in Kwa Zulu-Natal

The various Emmaus Ministries enable us to be God's hands and feet in the world, reviving Christians' love of God and being inspired to serve Him in the local church. The administration of these ministries is vital to ensure that communities achieve their goals. Obviously the administration process needs to be efficient, economical and unobtrusive giving those who do the ministries' work the best support and tools.

In order to cope with the large distances that had to be travelled during training and the walks, a decision was made to create two Emmaus communities in the province of Kwa Zulu-Natal, viz. KZN Emmaus and Drak Emmaus. These communities are administered by duly constituted Boards. Chrysalis was introduced as a ministry to cater for the youth. It was decided to have one Chrysalis community serving the entire province. A Board was set up to administer the Chrysalis ministry known as KZN Drak Chrysalis.

Very recently KZN Emmaus was chosen to introduce a further ministry called Face-to-Face. Plus, there is a strong possibility that further Upper Room ministries will be introduced in the near future. If the model above, used for Chrysalis, were implemented for these new ministries more communities and Boards would need to be created in order to administer each ministry. This would become extremely untenable. It would require a further duplication of all administrative functionality: CLD, CSD, secretary, treasurer, registrar, trainer, team selection, etc., etc., etc., plus a duplication of bank accounts and charges, computer systems, venues, infrastructure and more.

Since similar problems exist in the other geographic regions in South Africa, this entire issue was debated at length at the EMSA Indaba and AGM held at White River between 3 and 6 November 2016. The only viable solution found was to have a single board in each geographical area which would administer all ministries in its area. There would be no duplication of administrative functions, eg. The registrar would be responsible for registering pilgrims for Walks, Flights, Face-to-Face Encounters, etc. Plus, within each board there would be one champion (ALD) focused on each ministry. In reality, this is how the Alarga Stroll was administered and is exactly how the Face-to-Face encounters were administered during 2016 by KZN Emmaus. We have proved that this solution can work successfully.

Unfortunately no Chrysalis flights were held by KZN Drak Chrysalis during 2016. A number of problems have been experienced by the community. I don't believe that this is the forum to discuss the problems but the KZN Emmaus, Drak Emmaus and KZN Drak Chrysalis representatives, at the Indaba, looked at the above as a viable solution to these problems. By creating a Chrysalis leg within both traditionally "Emmaus" communities we would be removing duplication of effort and reduce the distances travelled for training and Flights.

Consensus was reached and a decision was made to adopt this administrative model within the EMSA Board and the Community Boards. There are a number of issues that will have to be investigated and solved such as the matter of assets belonging to the Chrysalis communities. Not only the physical but also the intellectual assets, eg. historical information. But everyone believes that we will be able to deal with these issues in a way that is equitable and fair. In Kwa Zulu-Natal the process will be driven by all three Boards ensuring transparency and

consensus. Progress will be communicated to all as it happens. All future flights will be held under the auspices of KZN Emmaus and Drak Emmaus respectively.

This will in no way dilute the effectiveness of the Chrysalis ministry. In fact it will free up a number of people who were involved on the Board to rather be involved in the Flights and make the ministry more effective.

We pray that God will guide us and strengthen us through the process of transformation so that we may offer better support to the ministries that we administer. We pray that the change will better prepare us to be His hands and feet and continue to give others the love and care that we experienced on our walks and flights.

De Colores.



KZN Emmaus Board Nomination Form

After prayerful and contemplative consideration, I propose the nomination of

for election to the KZN Emmaus Board for the portfolio of _____

Proposer Name: _____ Signature: _____

Date: _____

After prayerful consideration, I believe that I have been called to this appointment and being fully aware that this is a three year commitment, accept the above nomination to be elected to the KZN Emmaus Board for the above portfolio.

Nominee Name: _____ Signature: _____

Date: _____

I, the nominee's minister / priest / pastor, acknowledge that the nominee is in good standing with our church and acknowledge that I have been advised by the nominee of what this commitment will mean.

Name: _____ Signature: _____

Date: _____

I, the leader of the _____ Reunion Group confirm that the nominee plays an active role in the life of the reunion group and support this nomination.

Name: _____ Signature: _____

Date: _____
